

CONFIRMATION TESTING OF Δ -8 & Δ -9 THC METABOLITES

DTPM
TOXICOLOGY

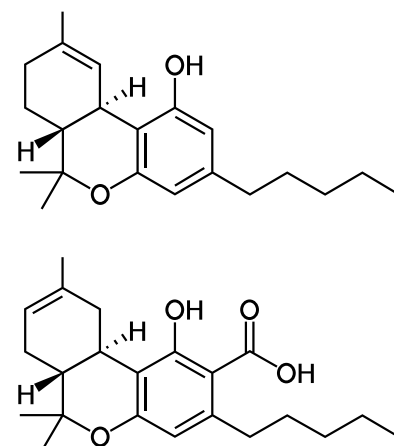
CONFIRMATION TESTING TO DIFFERENTIATE Δ -8 THC FROM Δ -9 THC METABOLITES

United States federal law dictates that legal hemp-based cannabis products must contain less than 0.3% Delta-9 Tetrahydrocannabinol. Delta-8 THC is a positional isomer of Delta-9 THC which has psychoactive properties similar to those of Delta-9 THC. Hemp-based products containing higher levels of Delta-8 THC are being produced and consumed with increasing frequency by consumers. Traditional screening and confirmation tests do not distinguish Delta-8 THC from Delta-9 THC.

Screening tests may give a presumptive positive result for the Δ -8 THC metabolites in addition to the illegal Δ -9 THC metabolites creating the need for differentiating between the legal and illegal cannabinoids. DTPM announces the

TEST REQUIREMENTS:

Sample Type:	Urine that produced a presumptive positive result for THC
Collection Device:	Standard urine collection cup
Order Number:	Delta-8/9 Confirmation Panel
Sample Storage:	Refrigerate after collection prior to shipping to DTPM. Storage in extreme heat or uncontrolled temperatures for longer than seven days may result in decreased accuracy.
Sample Shipping:	Ship sample and chain of custody documentation overnight to DTPM for best results. Biological shipping status must be used.
Rejection Criteria:	Samples that have illegible, contradictory, or missing information on the chain of custody form may be rejected. Sample leakage may result in rejection.



Note: This test does not detect Δ -10 THC metabolites

Contact us today for more information at 256-845-1261

Visit the DTPM Store at store.dtpm.com for drugs of abuse screening reagents, urine collection cups, and general supplies such as gloves, lint-free wipes, transfer pipettes, etc.

Call us today for a customized pricing quote!